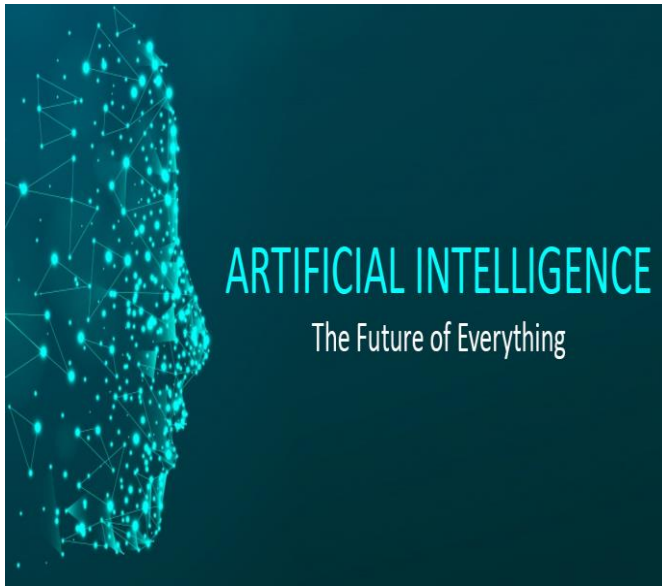




उत्कृष्ट तंत्र ज्ञानार्थं जनशक्तैः शिक्षणं

SHRI GURU GOBIND SINGHJI INSTITUTE OF ENGINEERING AND TECHNOLOGY VISHNUPURI NANDED- 431606 (MS), INDIA

(Government Aided an Autonomous Institute)



ARTIFICIAL INTELLIGENCE

The Future of Everything

**M.Tech. Program in
ARTIFICIAL
INTELLIGENCE**
Department of Electronics
and Telecommunication
Engineering

Contact

Head/M.Tech Coordinator,
Department of Electronics and
Telecommunication Engineering
Email: head.etc@sggs.ac.in
Phone: 02462 269201/220
Website: www.sggs.ac.in

What Makes our Program Unique?

- Covers Artificial Intelligence & Machine Learning technologies and applications including Machine Learning, Deep Learning, Computer Vision, Natural Language Processing, Visual and Big Data Analytics, Advanced Signal Processing for ML, Reinforcement Learning, Neural Network, Tensor Flow etc.
- Research and Industry oriented syllabus designed by leading academicians and industry experts.
- Students will be able to develop expertise in popular AI & ML technologies and problem-solving methodologies.
- Students will be able to learn to use popular AI & ML technologies like Python, Tensorflow and Keras to develop real world applications.
- Students will build expertise in AI & ML, which are the most sought-after skills around the world.
- Teaching assistant ship of Rs. 5000/- per month for maximum of 7 months for non-GATE students in second year, If the students are working for their dissertation in campus.
- Students with BE/B.Tech. in ECE/EC/CSE/IT/EE/INSTRU are eligible.
- MoU with renowned Industries and Academia.

Facilities Available

- State-of-the-art infrastructure with high end Machines, GPU Servers, Software's tools in Laboratories and ultramodern Digital Classrooms.
- Experienced and Research oriented 15 Faculty Members team with PhDs from IIT and having cumulative research citation index of 7500+.



Areas of Expertise

